



THE LOST CONTINENT by Cutcliffe Hyne is still the greatest of all Atlantis novels ever written! Available for the first time in many years as a well made, cloth bound book. A handsome volume you will be proud to place upon your shelves with the rest of the classics of fantasy. With an introduction by L. Sprague de Camp, well known author of many science fiction and fantasy books, and a frontispiece by William Dixon. And selling at a price about half that asked by any of the so-called reprint houses that have been cropping up right and left --they give you very little for your money!

\$6.50

OSWALD TRAIN: PUBLISHER

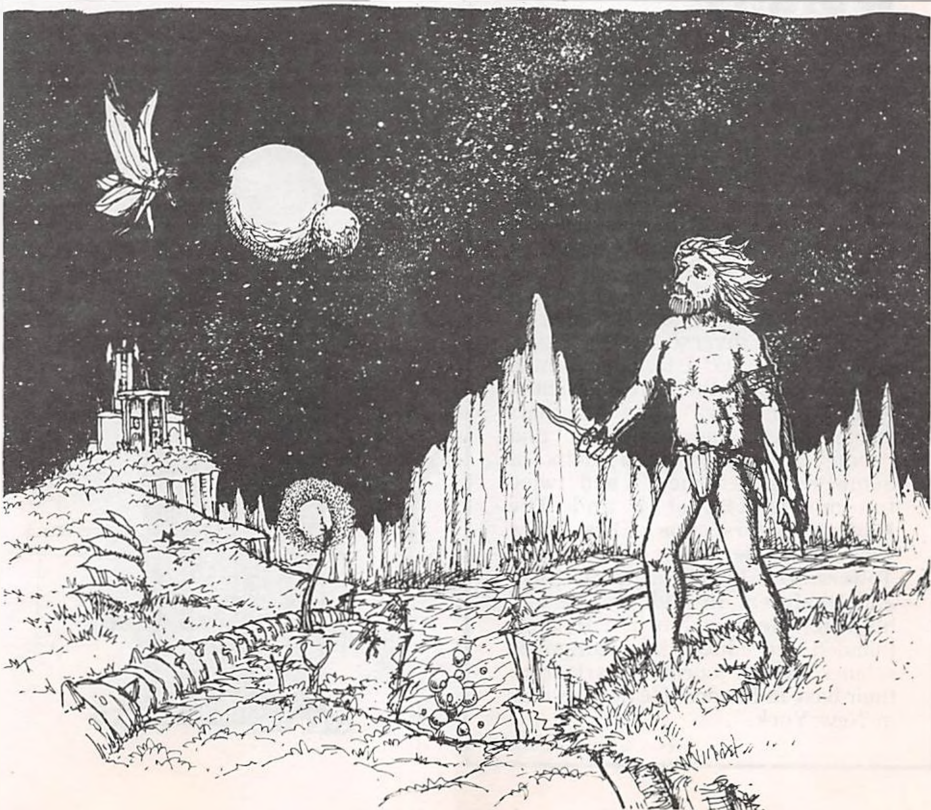
P. O. BOX 1891

PHILADELPHIA, PA. 19105

**A world calls  
to you**

she beckons through the millenniums  
her lure an inescapable force  
stronger than the currents of  
time and space  
her name is earth  
and you are her children  
come and see what she offers

**Lehman & Ellner, Imports**  
p.o. box 304, redlion, pa., 17356



# Samuel R. Delany

was born on April Fool's Day, 1942 in New York City. He grew up in New York's Harlem district and attended the Bronx High School of Science. At City college he served as poetry editor of the magazine *Prometheus*. He composed his first novel at nineteen and, at intervals between novels, worked in jobs ranging from shrimpboat worker to folk singer --- in places as diverse as the Texas Gulf, Greece and Istanbul. Samuel Delany has won the coveted Nebula Award four times twice for short stories ("Aye, and Gomorrah" and "Time Considered as a Helix of Semi-Precious Stones") and twice for novels (*Babel-17* and *The Einstein Intersection*). His other works include *The Fall of the Towers*, *The Jewels of Apor*, *Nova* and *Dhalgren*. In addition, he and his wife, the poet Marilyn Hacker, founded and edited the avantgarde science fiction journal *Quark* from their base in London. He now resides in New York.

courtesy of Bantam Books



DOUBLEDAY & COMPANY, INC.

The Biggest Hardcover Publisher  
of Science Fiction

Salutes

FREDERIK POHL

author of The Early Pohl

RON GOULART

author of The Hellhound Project

JOHN MORRESSY

author of Under A Calculating Star

BEN BOVA

editor of Analog 9

Available Through Your Local Bookstore

# PhilCon 1975

CHAIRMAN

OPERATIONS  
MANAGER

PROGRAM DIRECTOR

REGISTRATION

ADVANCE  
REGISTRATION

HUCKSTER ROOM

ASSISTANT MANAGER

ART SHOW

FILM PROGRAM

SFWA LIASON

PRESS LIASON

PRODUCTION

# CON COMMITTEE

Dennis W. McCunney

Patrick McGrath

Brian Burley

Cliff Bell

Meg Phillips

Ozzie Train

Walter Rittenhouse

Matt Howarth

Mike Kister

Gardner Dozois/Sue  
Casper/Tom Purdom

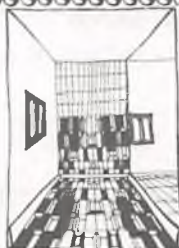
Michael Swanwick

HOWSKI GRAFIX

STAFF: Yoel Attiya, Lynn Cohen, Diane DeKalb, Jack McKnight, Ann McKnight, Stacy Tecker, Randi Millstein, Howard Wilkins, Lew Wolkoff, Sue Clayton, Glenn O'Hara, Thierry Phillips, Nick East, Linda East, Mark Leber, Alice Leber, Demian Phillips (Mascot).

## NOTE:

Committee members will be wearing dark green badges. Staff members will be wearing light green badges. If you have any questions or problems, please see the appropriate committee member. They will be happy to help you.



Thanks to Sue Casper & Gardner Dozois for Restuarant Guide.  
Special thanks to the Karma Kadets.

contents © 1975 - anthony sciarra  
rights revert to individual contributors.

# PhilCon 75

The Philadelphia Science Fiction Society and the PhilCon Committee welcome you to the 39th annual Philadelphia Science Fiction Conference.

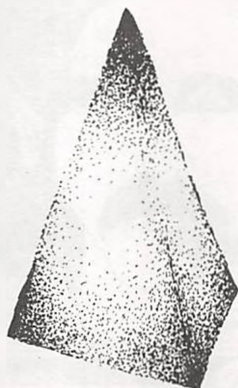
The Society has been in continuous existence for forty years making it the oldest Science Fiction Club in the United States.

This year PhilCon is hosting the Science Fiction Writers of America's annual editors, publishers and writers party, Saturday. A cash bar party will precede the SFWA function. The cash bar is of course open to the entire membership of the PhilCon. The SFWA party is by invitation only.

At the registration tables, there are two bulletin boards on which any changes in schedule and important notices will be posted. Should any problems develop with the hotel, its staff, other guests or whatever, please find a PhilCon Committee member to solve the problem at the time and not the night after the PhilCon. The Committee members are all wearing dark green PhilCon badges. The staff members are wearing light green badges. The Committee and staff are here to help you have an enjoyable PhilCon.

Information on events in Philadelphia, movies, theatre etc. can be found at the registration tables. A list of parking lots in the area will be posted on the bulletin board. A restaurant guide is included in the program book.

In order to be admitted to the huckster room and the art show you must be wearing your PhilCon badge.



## Philadelphia Science Fiction Society Officers for 1975

President - Dennis McCunney	Vice President- Lew Wolkoff
Treasurer- Patrick McGrath	Secretary- Meg Phillips
Scapegoat- Dennis McCunney	

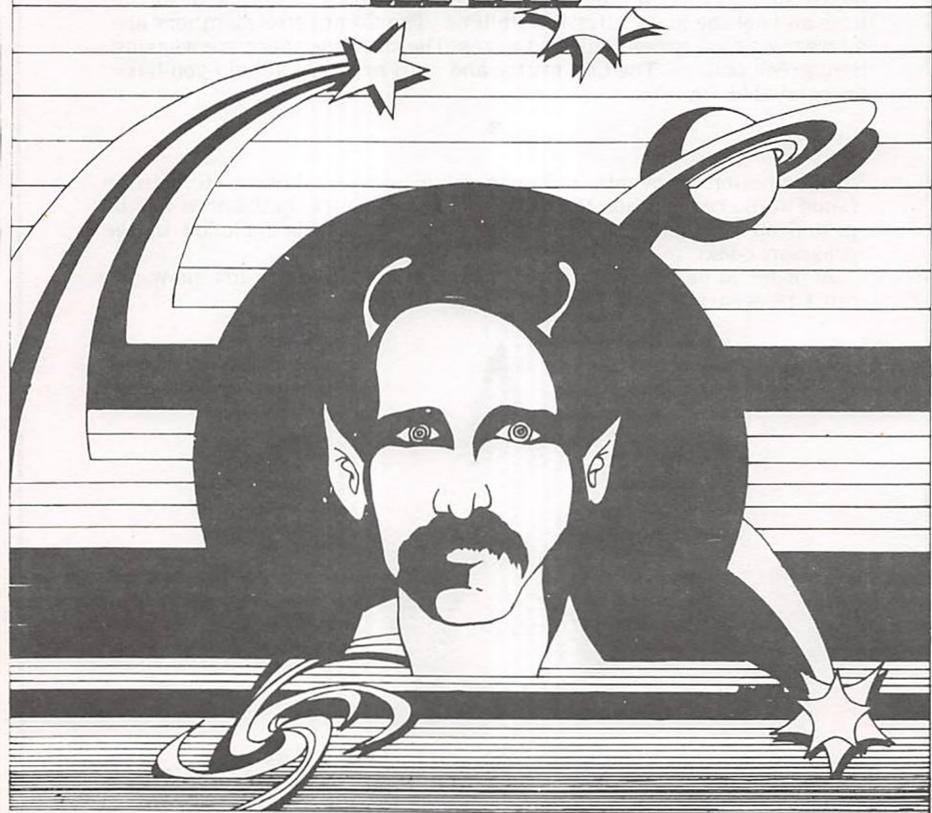
# HOURGLASS

## SCIENCE FICTION

BOOKS & PERIODICALS

341 S. 13TH ST. PHILA. 19107

732-8852







PHIL-CON?

COSMIC  
MUFFINS

LET'S  
GO,  
GIRLS.

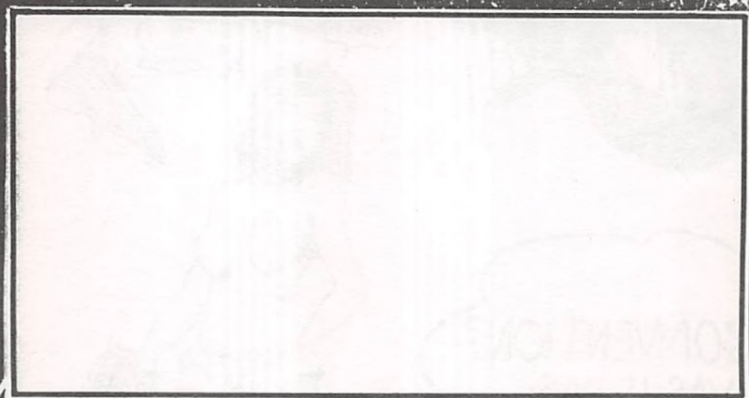
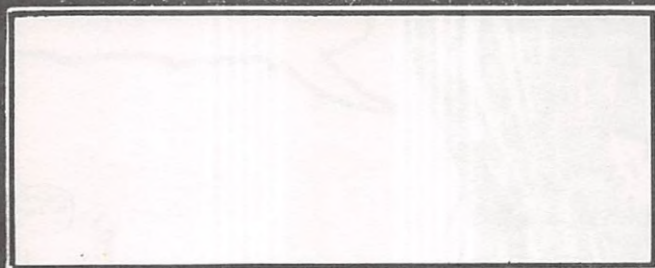
NOW WE OFF  
TERT SCLAY  
WILSON DUDE

KISS OFF,  
RUBY THE  
DYKE!

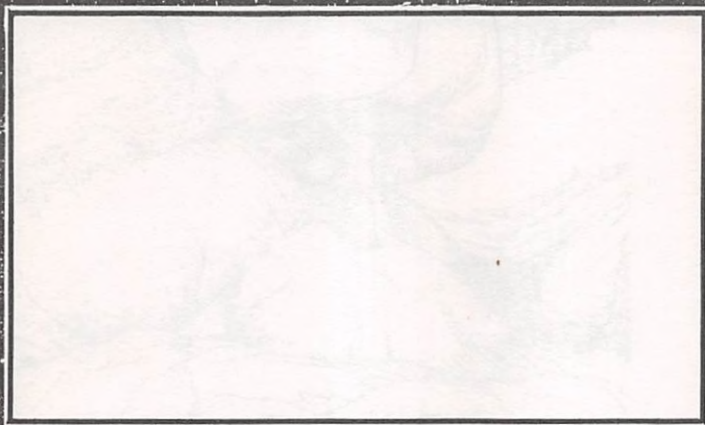
CONVENTION?  
VAS IS DAS  
CONVENTION?

SAVAGE  
MADNESS  
SATURDAY  
NIGHT AT  
THE CON.....

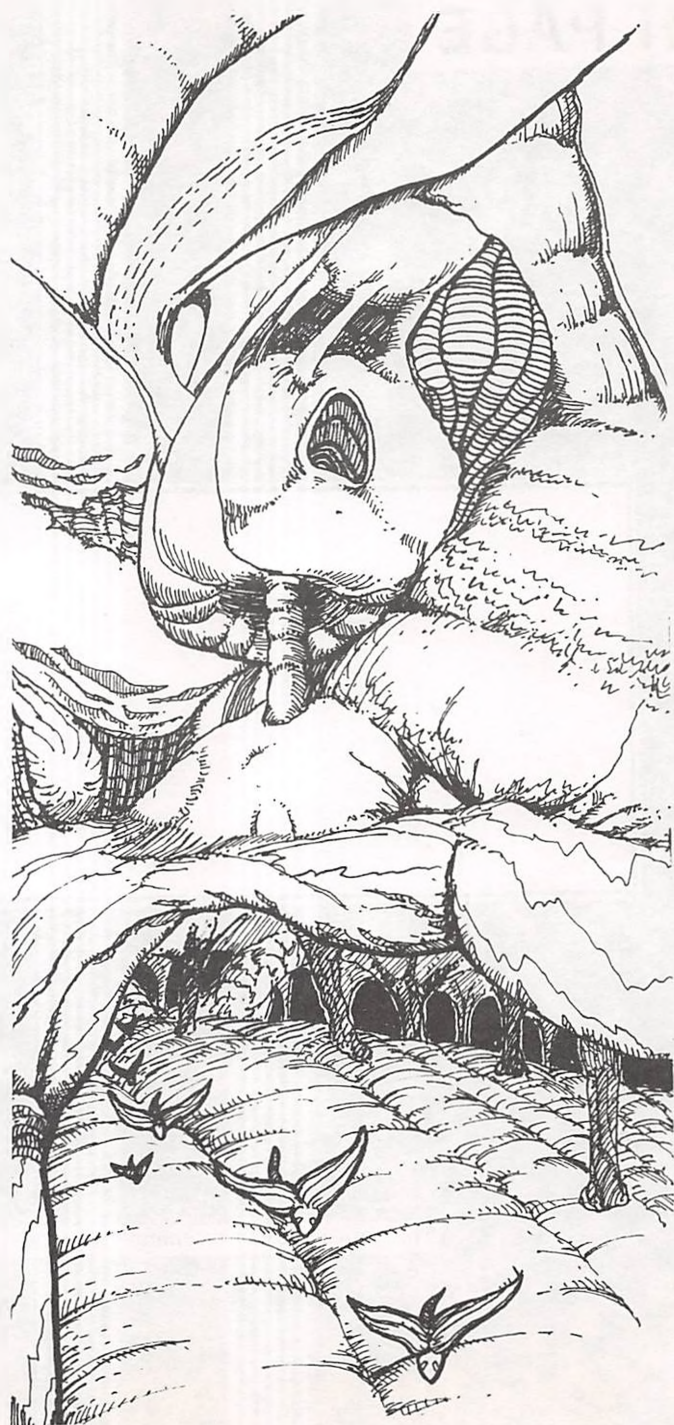
AUTOGR



H PAGE



The above subject to change without notice.





# PHILCON RESTAURANTS GUIDE

## 24 HOUR RESTAURANTS

**The Society Hill Restaurant & Deli** 262 S. 10th St. between Spruce and Locust Sts. subs, hamburgers, platters and some groceries breakfast all hours and cheap. Early newspapers available.

**The Mid-Town** 11 140 S. 11th St. between Walnut & Chestnut Sts. same as Society Hill, a little more expensive on some things. No newspapers or groceries.

## BREAKFAST

**Kipsely Sweet Shoppe** 11th St. between Walnut & Locust Sts. breakfast and lunch. Excellent Greek pasteries Sat. 7-6pm. Closed Sunday.

**The Mid Town Restaurant** 702 Sansom St., 7th between Chestnut and Walnut. 6:30 am - 9pm Sat. and Sun. tends to be crowded but good.

## Lunch

**Stan's House of Sandwiches** 706 Chestnut St. deli, 9-5 Fri. and Sat. Closed Sun. a little expensive but worth it.

**Moe's Steaks** across 9th St. from hotel is **NOT RECOMMENDED**.

**Sam's Sandwich Shop** 114 S. 9th St. next to Moe's Steaks is better cheap deli stuff. opens at 5 am Sat. to 4pm, closed Sun.

**The Little Den** Walnut St. between 7th and 8th Sts. good place for lunch, good subs and platters, but the house specialty is a fair Soulvaki sandwich one of the few in the city. Open 7am to 6pm closed Sun.

**Nick's Roast Beef** 713 Walnut St. bsmt. between 7th & 8th St. well-stocked bar, good roast beef sandwiches, open late closed Sun.

## Dinner

**Maharaja** 11 237 Chestnut St, 2nd and Chestnut, Indian, to order curry vindaloo, good wines and beer available, very relaxed atmosphere, lunch \$3.50 and up, Dinner \$3.50 - 6.50 (complete dinner) Fri. 5-11pm, Sat. 1-12pm, Sun. 3-11pm.

**Kelly's on Lublow** 1620 Ludlow St. between Market & Chestnut Sts. excellent seafood house, bar open with restaurant, open for lunch to 3 pm opens dinner 5pm to 2am also open Sun.

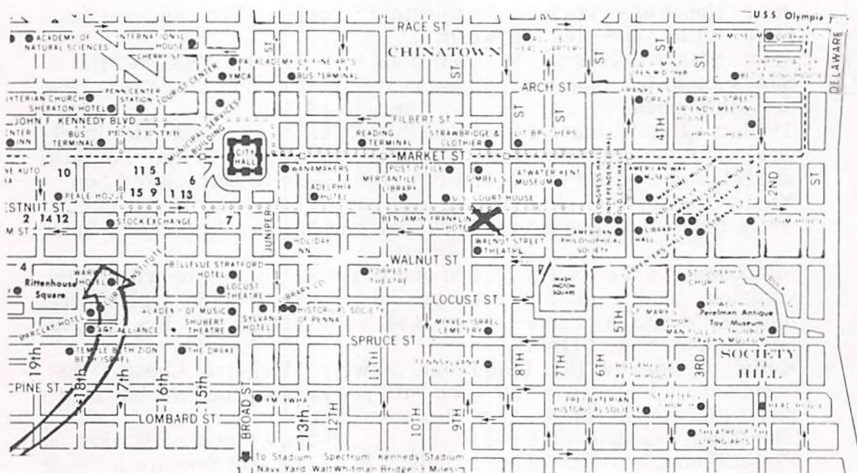
**The Happy Gardens** 10th and Cherry St. 100 block North of Market, in Phila. Chinatown. For about 7 dollars Mr. Chin will prepare a house dinner for you, a multicourse banquet of fine Chinese food, drinks are available, try the cocoanut punch.

**Mayflower and Mayflower** 11 220 N. 10th St. and Cherry and 10th more expensive but excellent one of them is now strictly vegetarian and good. Call ahead for reservations.

**Middle East Restaurant** 126 Chestnut St. a bit expensive but the live Arabic music and the Belly-dancers make it quite worthwhile, all kinds of pasteries, turkish coffee wine & liquor. Food is exceptional.

Hoffmann House, 1214 Sanson St. WA5-2772 - Good German Food, some seafood, lots of atmosphere, dark bread and Dinkelacker beer. They also serve game in season, and they should have venison and pheasant on the menu now; they did a week ago. Dinner about \$2.50 to \$8.50. Old Original Bookbinders 125 Walnut St. WA5-7027 The classic Philadelphia restaurant, and tradition of traditions, and one of the oldest restaurants in the country - seafood is your best bet, fresh & delicious (you can pick out your own lobster) but the steaks are also good - try the snapper soup here, if you've never had snapper before; it's perhaps the best in town, and a bowl of it is practically a meal in itself - the restaurant is actually somewhat overpriced, but the ambience is worth it; you feel as if Ben Franklin could be eating in the next room, and who knows, maybe he is - open daily from 11:30 am, Saturday from noon, and Sunday from 1pm. Free parking.

### X - Ben Franklin



Remember that Center City Philadelphia is laid out on a grid plan: north-south streets are numbered streets (9th St., 10th St., etc.) and are in sequential order from the east to the west; east-west streets are named streets (Chestnut St., Pine St., South St., etc.). The convention hotel, for instance, is on the corner of 9th St. (a north-south street) and Chestnut St. (an east-west street), and so is easy to locate. You should have no trouble navigating in this part of Center City if you keep the grid layout in mind.



\* "Over 1000  
Sci-Fi and  
Fantasy  
Titles  
In Stock!

Open 'till ten  
7 days a week!"



6 NORTH 13TH ST.  
PHILA. PA. 19107  
LO 3-2265

**ROBIN'S BOOK STORE**

1837 CHESTNUT ST.  
PHILA. PA. 19103  
LO 7-2615

# The Neo American Church WELCOMES YOU TO PHILCON '75

The Neo-American Church welcomes all philosophically-similar attendees to PhilCon to visit the Neo-American Church Courtesy Room either to discuss psychedelics or to simply relax.

Also in the Neo-A Courtesy Room will be copies of the BOO HOO BIBLE (our Church catechism) and MILLBROOK (history of the psychedelic movement) for sale.

Also for sale, although the Primate steadfastly denies the externality of these, will be 3-month biorhythm charts, while the supply of charting cards lasts.

Anyone wishing to join the Church may fill out the application blank below and bring it to the Courtesy Room or mail it to the stated address.

NEO AMERICAN CHURCH, STATION RD., SOUTH HERO, VT. 05436

 Application for Membership in the Neo-American Church 

1. Everyone has the right to expand consciousness and stimulate visionary experience by whatever means he considers desirable and proper without interference from anyone.

2. The psychedelic substances, such as marijuana and LSD, are sacraments, in that they encourage Enlightenment, which is the realization that life is a dream and the externality of relations an illusion.

3. We do not encourage the ingestion of psychedelics by those who are unprepared, and we define preparedness as familiarity with solipsist-nihilist epistemological reasoning on such models as David Hume and Nagarjuna.

If you wish to join the church, fill out the blanks below and mail. Please enclose a donation of at least \$10 to cover initial mailing and first year's subscription to Divine Toad Sweat.

\_\_\_\_\_ I wish to join, since I agree with the principles of the church.

\_\_\_\_\_ All I want is literature and a year's subscription to DTS, but I do not wish to join the church at this time.

PRINT NAME \_\_\_\_\_ DATE \_\_\_\_\_

ADDRESS (include ZIP) \_\_\_\_\_

BIRTHDATE \_\_\_\_\_ SEX \_\_\_\_\_ OCC \_\_\_\_\_

SIGNATURE \_\_\_\_\_



# SEMINAR CORRESPONDENT

of the American Quarter Horse Association

1947

By [Name] of [Location]

The delegates should have a good time. There should be plenty of opportunity for meeting fans, engaging in fangab, and conducting horse trading among the collectors. There should be a fast-moving program which will stimulate the mind, and make the onlooker feel that S-F fans are indeed unusual people who can do unusual things.

PHILCON COMMITTEE 1947

# SCIENCE-FANTASY CORRESPONDENT

A New Magazine in Book Format

EDITED BY

WILLIS CONOVER

Co-Author with H. P. Lovecraft of the Book *Lovecraft at Last*

*Science-Fantasy Correspondent* is a new anthology of variations on themes of inner and outer space—from the publishers of *Lovecraft at Last*, Carrollton Clark.

*Lovecraft at Last* is acclaimed as "Extraordinary . . . Magnificent . . . Monumental . . . Breathtaking . . . A work of art . . . A literary coup . . . The best yet . . ."

Robert L. Dothard, designer of *Lovecraft at Last*, brings to *Science-Fantasy Correspondent*—a professional limited-edition magazine in *book format*—the same artistry of design.

*Science-Fantasy Correspondent* is much more than its superb design and its fine typography and paper. It is outstanding science fiction, supernatural fantasy, speculation, memoir, and criticism, selected or commissioned by Willis Conover. It is excitement, surprise, and nostalgia—old friends, new discoveries, new works—and stunning illustrations—by:

ROBERT AICKMAN	HENRY KUTTNER
BRIAN W. ALDISS	FRITZ LEIBER
ROBERT BLOCH	FRANK BELKNAP LONG
ARTHUR C. CLARKE	H. P. LOVECRAFT
WILLIS CONOVER	ROBERT T. McCALL
L. SPRAGUE DE CAMP	RON MILLER
ELLIOTT DOLD	E. HOFFMANN PRICE
NICTZIN DYALHIS	RAY RUSSELL
VIRGIL FINLAY	EDWARD SAMUELS
ANNIE E. P. GAMWELL	CLARK ASHTON SMITH
ROBERT E. HOWARD	KENNETH STERLING
JEFF JONES	JACK WILLIAMSON
DAVID H. KELLER, M.D.	GAHAN WILSON
T.E.D. KLEIN	DONALD A. WOLLHEIM

AND MANY OTHERS

*Science-Fantasy Correspondent* is published three times a year. A three-issue subscription, beginning with the first issue, is \$25. Outside USA, please add \$1 a copy. Although the edition is limited, your subscription is guaranteed if you send remittance with your order now.

Multiple-subscription rates are available to clubs, book stores, and libraries. Inquire without cost or obligation.

WE URGE YOU TO RESERVE COPIES PROMPTLY

-----  
**Science-Fantasy Correspondent.**

Willis Conover, editor

Subscription (first three issues): \$25.00

*Lovecraft at Last*, H. P. Lovecraft and Willis Conover

Collector's Edition; slipcased; numbered, about 100 copies left: \$30.00

Deluxe Standard Edition: \$19.75

Supernatural Horror in Literature, 1936 condensation

Facsimile of Lovecraft's manuscript; limited, numbered: \$5.00

I enclose my check or money order for \$ \_\_\_\_\_

NAME \_\_\_\_\_

ADDRESS \_\_\_\_\_

\_\_\_\_\_

CITY \_\_\_\_\_

STATE \_\_\_\_\_ ZIP \_\_\_\_\_

CARROLLTON • CLARK (PC)

9122 Rosalyn

Arlington, Virginia 22209

-----  
(You may order without coupon, provided only for your convenience)





• HOWSKI GRAPHIX •

Visual enlightenment and graphic entertainment.

Contact 215-946 0923  
215-885 8183



